



Integrated Care Systems

Phil Richardson
NHS Dorset CCG

Integrated care system?



- ICS were previously called accountable care systems
- Take the lead in planning and commissioning care for their populations and providing system leadership
- A national initiative that has been extended to ten Sustainability and Transformation Plan (STP) areas, including Dorset.

YOUR NHS

Working together to shape
Dorset's Health

Integrated care system?



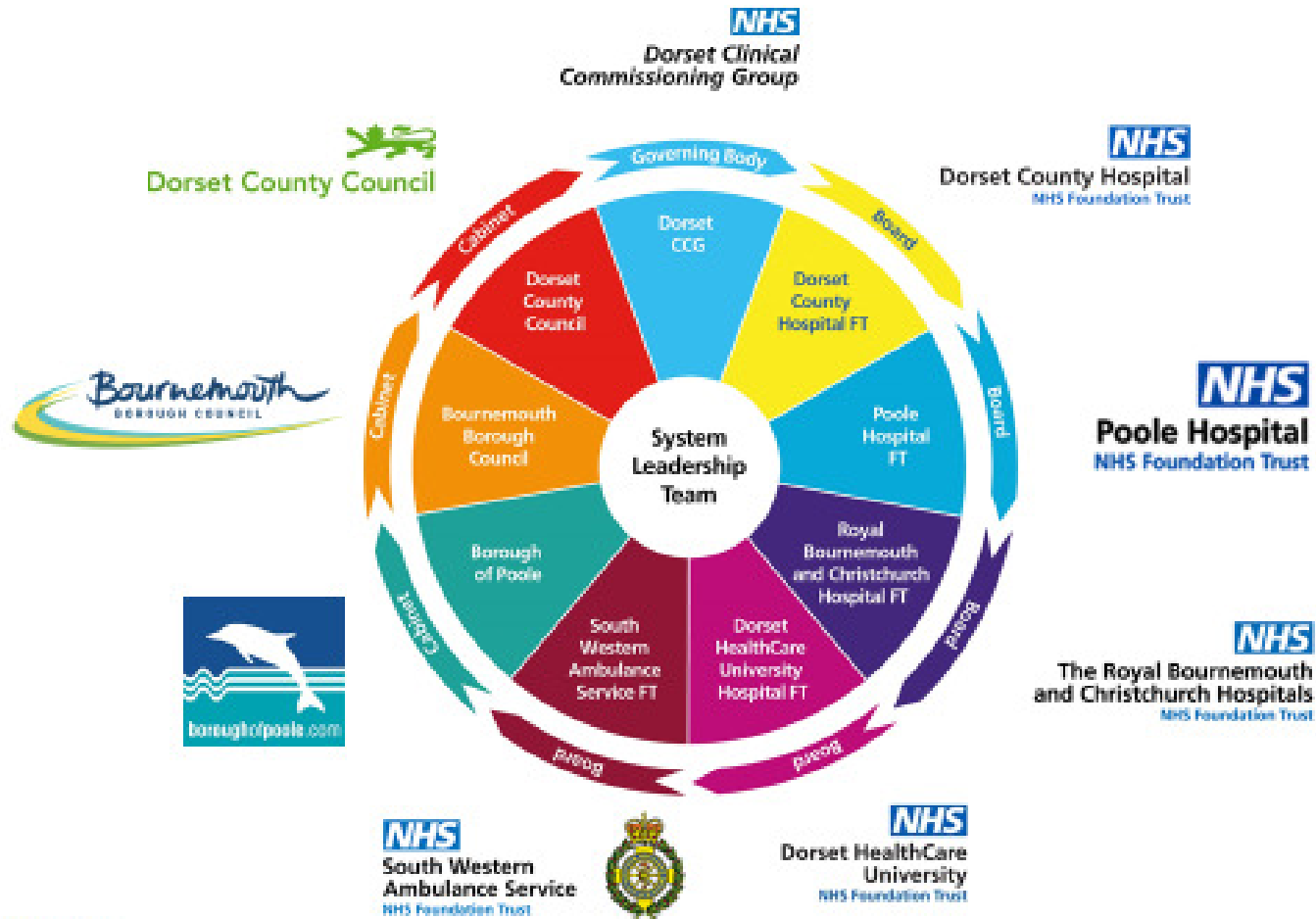
- Aims to align/integrate health and care planning and delivery around population outcomes that are meaningful locally
- More control of national funding – a pot of around £450 million over the next four years to support their transformation programmes
- Fast-track improvements eg A&E, quicker GP appointments, better access to high quality cancer and mental health services.

YOUR NHS

Working together to shape

Dorset's Health

ICS Partners in Dorset



ICS for Dorset



- Dorset is one of ten areas to become an 'integrated care system' (ICS)
- We have been an ICS in 'shadow' form since summer of 2017
- We are set to become a 'full' ICS in summer 2018/19 if the right progress has been made
- Delivery of the STP
- The changes to local hospital and community services resulting from the CSR form part of the way we will deliver these exciting and important changes to health and care services.

YOUR NHS

Working together to shape

Dorset's Health

Memorandum of Understanding



MOU describes 4 main objectives:

- to integrate services and funding over the ICS defined population
- to make rapid progress in urgent and emergency care reform, strengthen general practice and improving mental health and cancer services
- to manage within a system financial control total and maximise efficiencies
- to act as a leadership cohort for subsequent ICS sites, demonstrating what can be achieved within increased freedom and flexibilities.

YOUR NHS

Working together to shape

Dorset's Health

A blue rectangular sign with rounded corners, tilted at an angle, hanging from a small blue circular dot at the top center by two thin white lines. The sign contains the text 'Sustainability and Transformation Plan' in white, bold, sans-serif font.

Sustainability and Transformation Plan

YOUR NHS

Working together to shape
Dorset's Health

STP: implementing transformation plans



The Sustainability and Transformation Plan (STP) explains how we will implement wider transformation plans including the CSR decisions.

YOUR NHS

Working together to shape
Dorset's Health

STP – the bigger picture



3 national gaps:

Health and wellbeing

Care and quality

Finance and efficiency

In Dorset, addressed by five portfolios:

Acute hospital care (One Acute Network)

Integrated community and primary care services

Prevention

Digital

Working and leading differently

YOUR NHS

Working together to shape
Dorset's Health

STP programmes



Under each of the portfolios sit a number of programmes, e.g.:

Integrated community and primary care services

- Providing more services in community hubs closer to people's homes
- Developing integrated teams
- Improving access to GP services

One Acute Network

- Providing dedicated specialist hospitals for emergency and planned care
- Maternity
- Cancer services

YOUR NHS

Working together to shape

Dorset's Health

STP programmes



Prevention (at scale)

- Starting well
- Living well
- Ageing well
- Healthy places

Digital

- Dorset Care Record
- Making better use of data
- Independent self-care

Leading and working differently

- Recruitment and retention of staff
- Developing leaders/staff
- Supporting staff through change
- Workforce planning

YOUR NHS

Working together to shape
Dorset's Health

STP Portfolio Progress



One Acute Network

- Financial modelling is underway
- Poole Hospital and Royal Bournemouth Hospital merger case is being drafted.

Integrated community and primary care services

- Community hub Outline Business Cases being produced by Dorset Healthcare
- Development underway of an operating model for Shaftesbury
- Primary care workforce mapping and transition planning has been undertaken in each locality and shared with local teams for validation.

Digitally transformed Dorset

- The Dorset Care Record is now live and continues to expand its user base
- Whilst positioning our efforts and deliveries on the applications and services delivered to staff and patients, we continue to develop the underlying infrastructures needed to support all that change.

YOUR NHS

Working together to shape

Dorset's Health

STP Portfolio Progress



Prevention at Scale

- An integrated Children's Centre / Health Visitor pathway has been agreed and implementation planning is now underway.
- New LiveWell Dorset website is live
- A pilot for the Living Well Active programme is planned for North Dorset with engagement events scheduled in July to identify health champions who will be trained to support people to increase physical activity.

Leading and working differently

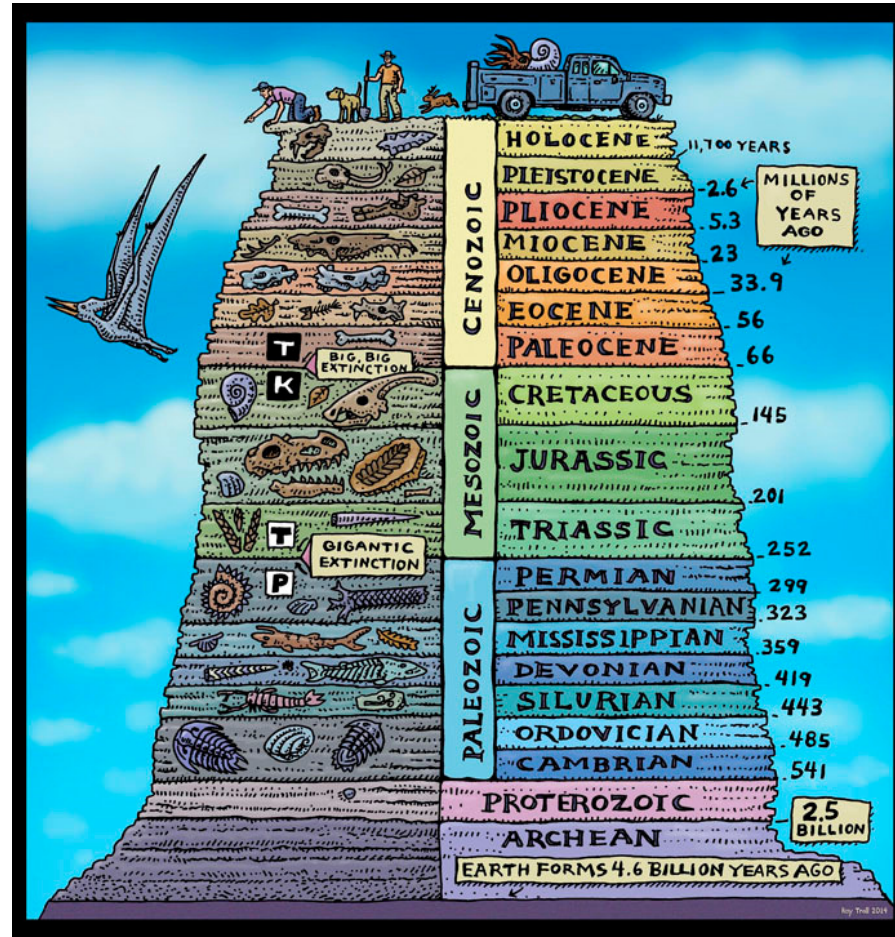
- A Stocktake took place at the February the Dorset Workforce Action Board (DWAB) in order to refocus the purpose and commitment and how we plan to work together and align work streams
- The mental health workforce expansion plan to deliver the five-year forward view is currently be assured by Health Education England and NHS England.

YOUR NHS

Working together to shape

Dorset's Health

Timescales



YOUR NHS

Working together to shape
Dorset's Health

Five-year plan



- Five year plan
- Different aspects will be introduced at different times - some dependent on various constraints or imperatives such as nationally mandated services (extending access to primary care, expanding access to psychological therapies)

YOUR NHS

Working together to shape
Dorset's Health